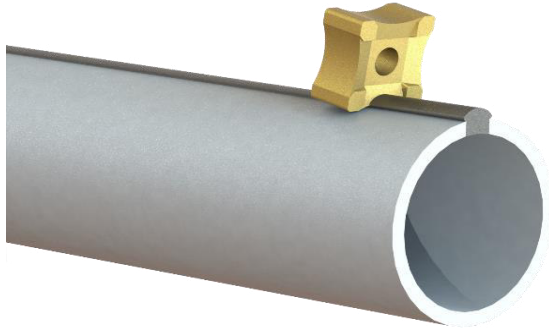


Technische Information / Technical Information



S > N > M > X > 15 > - > R10 > ; > P34

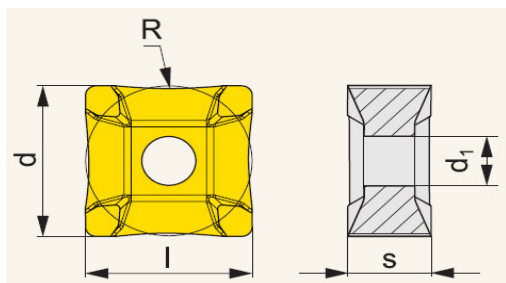
S	Plattenform (ISO) S = Vierkantplatte
N	Freiwinkel (ISO) N = neutral 0°
M	Toleranzklasse (ISO)
X	Spannfläche (ISO) X = Spezialausführung
15	Plattengrösse / Size 15 = 15.875 mm 19 = 19.050 mm 25 = 25.400 mm
R10	Radius erhältlich von R0 - 200
P35/P34	Ausführung P35 = TiN (goldig) P34 = Al2O3 (schwarz)

S	Insert shape (ISO) S = Square
N	Free angle (ISO) N = neutral 0°
M	Tolerance class (ISO)
X	Chip breaker (ISO) X = special execution
15	Insert size 15 = 15.875 mm 19 = 19.050 mm 25 = 25.400 mm
R10	Radius available from R0 - 200
P35/P34	Execution P35 = TiN (gold) P34 = Al2O3 (black)

Wir empfehlen die TiN-Beschichtung, auf Wunsch Al2O3-Beschichtung
We recommend TiN-coating, according your request with Al2O3-coating

WP Aussenentgraten / Inserts for outside scarfing

SNMX 15



Artikel Order-No.	Beschreibung Description	Ausführung Execution	Dimension (mm)					Rohraussen - Ø Tube outside - Ø
			l = d	d1	h	R		
10008823	SNMX 15 - R00	P35 / P34	15.875	5.16	8.15	0	0	
10006768	SNMX 15 - R07	P35 / P34	15.875	5.16	8.15	7	8 - 10	
10008781	SNMX 15 - R09	P35 / P34	15.875	5.16	8.15	9	10 - 13	
10008782	SNMX 15 - R11	P35 / P34	15.875	5.16	8.15	11	13 - 16	
10008792	SNMX 15 - R13	P35 / P34	15.875	5.16	8.15	13	15 - 19	
10008783	SNMX 15 - R15	P35 / P34	15.875	5.16	8.15	15	17 - 22	
10008784	SNMX 15 - R18	P35 / P34	15.875	5.16	8.15	18	21 - 26	
10008785	SNMX 15 - R20	P35 / P34	15.875	5.16	8.15	20	23 - 29	
10008786	SNMX 15 - R22	P35 / P34	15.875	5.16	8.15	22	25 - 32	
10008787	SNMX 15 - R25	P35 / P34	15.875	5.16	8.15	25	29 - 36	
10008793	SNMX 15 - R27	P35 / P34	15.875	5.16	8.15	27	31 - 39	
10008788	SNMX 15 - R30	P35 / P34	15.875	5.16	8.15	30	35 - 44	
10008794	SNMX 15 - R35	P35 / P34	15.875	5.16	8.15	35	40 - 51	
10008795	SNMX 15 - R40	P35 / P34	15.875	5.16	8.15	40	46 - 58	
10008796	SNMX 15 - R45	P35 / P34	15.875	5.16	8.15	45	52 - 65	
10008797	SNMX 15 - R50	P35 / P34	15.875	5.16	8.15	50	58 - 73	
10008798	SNMX 15 - R60	P35 / P34	15.875	5.16	8.15	60	63 - 80	

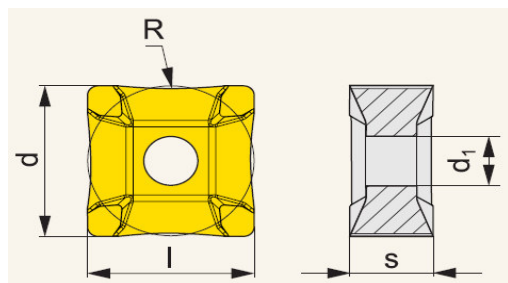
Spezialgrößen / Special size

10008790	* SNMX 15 - R08	P35 / P34	15.875	5.16	8.15	8	9 - 11
10008789	* SNMX 15 - R10	P35 / P34	15.875	5.16	8.15	10	11 - 14

*andere Qualitäten und Sondergrößen auf Anfrage
different qualities and special sizes on request*

WP Aussenentgraten / Inserts for outside scarfing

SNMX 19

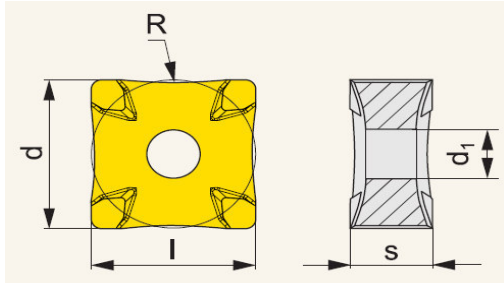


Artikel Order-No.	Beschreibung Description	Ausführung Execution	Dimension (mm)					Rohraussen - Ø Tube outside - Ø
			l = d	d1	h	R		
10008824	SNMX 19 - R00	P35 / P34	19.050	7.95	8.15	0	0	
10008799	SNMX 19 - R10	P35 / P34	19.050	7.95	8.15	10	12 - 15	
10008800	SNMX 19 - R12	P35 / P34	19.050	7.95	8.15	12	14 - 17	
10008801	SNMX 19 - R15	P35 / P34	19.050	7.95	8.15	15	17 - 22	
10008825	SNMX 19 - R18	P35 / P34	19.050	7.95	8.15	18	21 - 26	
10008802	SNMX 19 - R20	P35 / P34	19.050	7.95	8.15	20	23 - 29	
10008826	SNMX 19 - R22	P35 / P34	19.050	7.95	8.15	22	25 - 32	
10008803	SNMX 19 - R25	P35 / P34	19.050	7.95	8.15	25	29 - 36	
10008804	SNMX 19 - R30	P35 / P34	19.050	7.95	8.15	30	35 - 44	
10008805	SNMX 19 - R35	P35 / P34	19.050	7.95	8.15	35	40 - 51	
10008806	SNMX 19 - R40	P35 / P34	19.050	7.95	8.15	40	46 - 58	
10008807	SNMX 19 - R45	P35 / P34	19.050	7.95	8.15	45	52 - 65	
10008808	SNMX 19 - R50	P35 / P34	19.050	7.95	8.15	50	58 - 73	
10008809	SNMX 19 - R55	P35 / P34	19.050	7.95	8.15	55	63 - 80	
10008810	SNMX 19 - R60	P35 / P34	19.050	7.95	8.15	60	69 - 87	
10008811	SNMX 19 - R65	P35 / P34	19.050	7.95	8.15	65	75 - 94	
10008827	SNMX 19 - R75	P35 / P34	19.050	7.95	8.15	75	86-108	
10008812	SNMX 19 - R80	P35 / P34	19.050	7.95	8.15	80	92 - 116	
10008828	SNMX 19 - R85	P35 / P34	19.050	7.95	8.15	85	92 - 116	
10008813	SNMX 19 - R90	P35 / P34	19.050	7.95	8.15	90	104 - 131	
10008814	SNMX 19 - R110	P35 / P34	19.050	7.95	8.15	110	127 - 160	

andere Qualitäten und Sondergrößen auf Anfrage
different qualities and special sizes on request

WP Aussenentgraten / Inserts for outside scarfing

SNMX 25



	Artikel Order-No.	Beschreibung Description	Ausführung Execution	Dimension (mm)				
				l = d	d1	h	R	Rohraussen - Ø Tube outside - Ø
	10008829	SNMX 25 - R00	P35 / P34	25.400	9.12	12.20	0	0
	10008815	SNMX 25 - R50	P35 / P34	25.400	9.12	12.20	50	58 - 73
	10008816	SNMX 25 - R80	P35 / P34	25.400	9.12	12.20	80	92 - 116
	10008817	SNMX 25 - R100	P35 / P34	25.400	9.12	12.20	100	115 - 145
	10008818	SNMX 25 - R120	P35 / P34	25.400	9.12	12.20	120	138 - 174
	10008819	SNMX 25 - R140	P35 / P34	25.400	9.12	12.20	140	161 - 230
	10008820	SNMX 25 - R160	P35 / P34	25.400	9.12	12.20	160	184 - 232
	10008821	SNMX 25 - R180	P35 / P34	25.400	9.12	12.20	180	207 - 261
	10008822	SNMX 25 - R200	P35 / P34	25.400	9.12	12.20	200	230 - 290

andere Qualitäten und Sondergrössen auf Anfrage
different qualities and special sizes on request